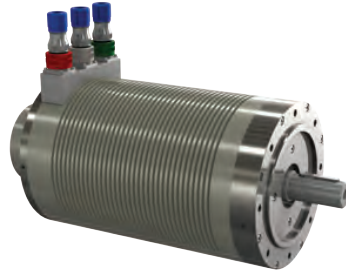


# Electric Propulsion System

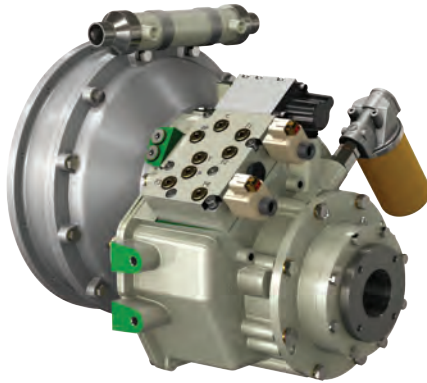
## Marine system



Electric machine



Saildrive



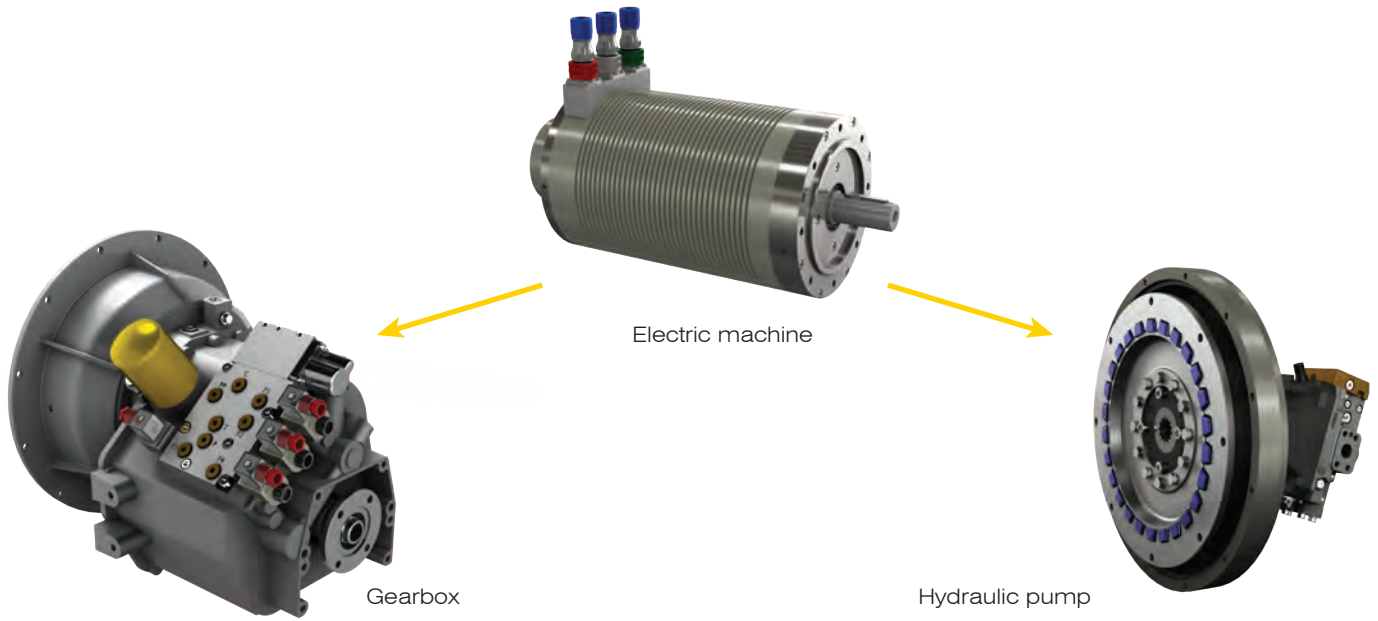
Marine gear



Sterndrive

<b>TYPE</b>	<b>POWER</b> at 3000 rpm kW (hp)	<b>NOMINAL TORQUE</b> Nm (lbs-ft)	<b>BATTERY VOLTAGE</b> V dc	<b>NOMINAL CURRENT</b> A	<b>WEIGHT</b> kg (lbs)	<b>TRANSMISSION</b>	<b>TRANSMISSION</b>	<b>TRANSMISSION</b>
EPS08	8 (11)	25 (18)	96	80	22 (48)	Marine Gear	Sail Drive	
ESP12	12 (16)	38 (28)	96	120	25 (55)	Marine Gear	Sail Drive	
EPS15	15 (20)	47 (35)	96	150	42 (93)	Marine Gear	Sail Drive	
EPS20	20 (27)	63 (47)	96	210	46 (101)	Marine Gear	Sail Drive	Stern Drive
EPS35	35 (47)	110 (81)	288	110	54 (119)	Marine Gear	Sail Drive	Stern Drive
EPS50	50 (68)	160 (118)	288	150	70 (154)	Marine Gear		Stern Drive
EPS75	75 (102)	238 (239)	288	220	110 (243)	Marine Gear		Stern Drive

## Electric Propulsion System Industrial system



<b>TYPE</b>	<b>POWER</b> at 3000 rpm kW (hp)	<b>NOMINAL TORQUE</b> Nm (lbs-ft)	<b>BATTERY VOLTAGE</b> V dc	<b>NOMINAL CURRENT</b> A	<b>WEIGHT</b> kg (lbs)	<b>TRANSMISSION</b>	<b>COUPLING</b> for Hydraulic pump
EPS08	8 (11)	25 (18)	96	80	22 (48)		
ESP12	12 (16)	38 (28)	96	120	25 (55)		
EPS15	15 (20)	47 (35)	96	150	42 (93)	Rangermatic	SRBD
EPS20	20 (27)	63 (47)	96	210	46 (101)	or	
EPS35	35 (47)	110 (81)	288	110	54 (119)	Revermatic	
EPS50	50 (68)	160 (118)	288	150	70 (154)		
EPS75	75 (102)	238 (239)	288	220	110 (243)		

