



HM560



HM2000



HM3350



HM6300

**HM560 suitable for Diesel engines up to 180 kW (240 hp) at 4000 rpm:**

*Suitable for marine gear, water jet, stern drive:*

- HM560- 8                      8 Kw at 3000 rpm powered at 96 V dc
- HM560-12                    12 Kw at 3000 rpm powered at 96 V dc
- HM560-15                    15 Kw at 3000 rpm powered at 96 V dc
- HM560-20                    20 Kw at 3000 rpm powered at 96 V dc
- HM560-35                    35 Kw at 3000 rpm powered at 288 V dc

**HM2000 suitable for Diesel engines up to 435 kW (580 hp) at 3000 rpm:**

*Suitable for marine gear, water jet:*

- HM2000-20                  20 Kw at 3000 rpm powered at 96 V dc
- HM2000-40                  40 Kw at 3000 rpm powered at 96 V dc
- HM2000-50                  50 Kw at 3000 rpm powered at 288 V dc
- HM2000-75                  75 Kw at 3000 rpm powered at 288 V dc
- HM2000-100                100 Kw at 3000 rpm powered at 288 V dc
- HM2000-150                150 Kw at 3000 rpm powered at 288 V dc

**HM3350 suitable for Diesel engines up to 620 kW (830 hp) at 2200 rpm:**

*Suitable for marine gear, water jet:*

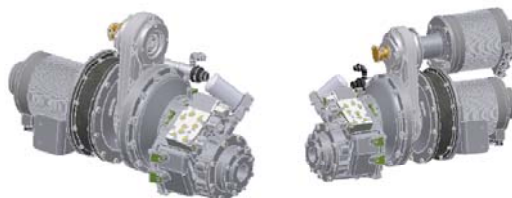
- HM3350-50                  50 Kw at 3000 rpm powered at 288 V dc
- HM3350-75                  75 Kw at 3000 rpm powered at 288 V dc
- HM3350-100                100 Kw at 3000 rpm powered at 288 V dc
- HM3350-150                150 Kw at 3000 rpm powered at 288 V dc

**HM6300 suitable for Diesel engines up to 1100 kW (1475 hp) at 2100 rpm:**

*Suitable for marine gear, water jet:*

- HM6300-50                  50 Kw at 3000 rpm powered at 288 V dc
- HM6300-75                  75 Kw at 3000 rpm powered at 288 V dc
- HM6300-100                100 Kw at 3000 rpm powered at 288 V dc
- HM6300-150                150 Kw at 3000 rpm powered at 288 V dc

**EPS - ELECTRIC PROPULSION SYSTEMS**



- EPS08                      08 Kw at 3000 rpm powered at 96 V dc With Marine gear
- EPS12                      12 Kw at 3000 rpm powered at 96 V dc With Marine gear
- EPS15                      15 Kw at 3000 rpm powered at 96 V dc With Marine gear
- EPS20                      20 Kw at 3000 rpm powered at 96 V dc With Marine gear
- EPS40                      20x2 Kw at 3000 rpm powered 96 V dc With Marine gear
- EPS35                      35 Kw at 3000 rpm powered at 288 V dc With Marine gear
- EPS50                      50 Kw at 3000 rpm powered at 288 V dc With Marine gear
- EPS75                      75 Kw at 3000 rpm powered at 288 V dc With Marine gear

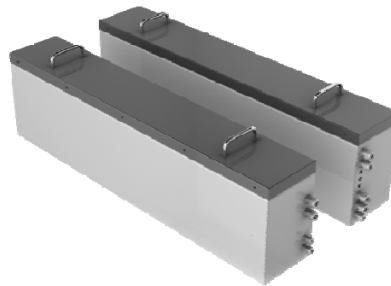
### EPS – ELECTRIC PROPULSION SYSTEMS:

- EPS08            8 Kw at 3000 rpm powered at 96 V dc with SAIL DRIVE
- EPS12           12 Kw at 3000 rpm powered at 96 V dc with SAIL DRIVE
- EPS15           15 Kw at 3000 rpm powered at 96 V dc with SAIL DRIVE
- EPS20           20 Kw at 3000 rpm powered at 96 V dc with SAIL DRIVE
- EPS35           35 Kw at 3000 rpm powered at 288 Vdc with SAIL DRIVE

### EPS – ELECTRIC PROPULSION SYSTEM:

- EPS08           8 Kw at 3000 rpm powered at 96 V dc with STERN DRIVE
- EPS12           12 Kw at 3000 rpm powered at 96 V dc with STERN DRIVE
- EPS15           15 Kw at 3000 rpm powered at 96 V dc with STERN DRIVE
- EPS20           20 Kw at 3000 rpm powered at 96 V dc with STERN DRIVE
- EPS35           35 Kw at 3000 rpm powered at 288 V dc with STERN DRIVE
- EPS50           50 Kw at 3000 rpm powered at 288 V dc with STERN DRIVE
- EPS75           75 Kw at 3000 rpm powered at 288 V dc with STERN DRIVE

### Battery Li-Fe-PO4 for hybrid and electric propulsions:



Capacity Ah	Energy storage Voltage 96 V dc	Energy storage Voltage 288 V dc
66	6,3 kWh – 90 kg	19,0 kWh – 280 kg
100	9,6 kWh – 120 kg	28,8 kWh – 350 kg
200	19,2 kWh – 215 kg	57,6 kWh – 645 kg
300	28,8 kWh – 380 kg	86,4 kWh – 1140 kg
400	38,4 kWh – 440 kg	115,2 kWh – 1320 kg

### Component for Hybrid and Electric marine propulsion systems



Marine gear intergrated



Control system



Frequency Drive



Management system